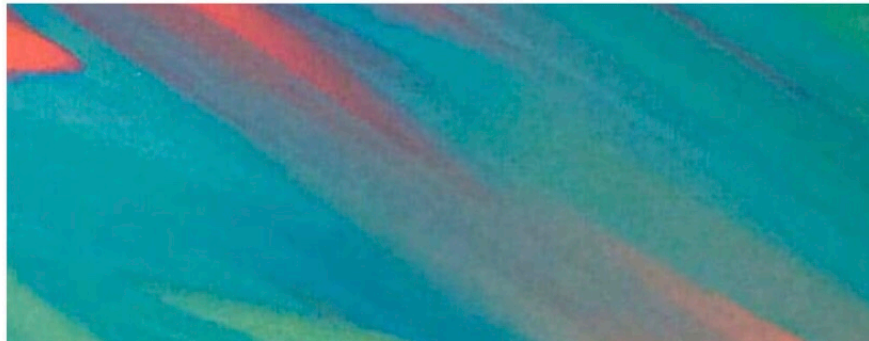


# THE BALBOA MYSTERY



**Designed for Orange County Quilters Guild**

By Lyn Brown

## **Supply List**

Medium Blue  $\frac{3}{8}$  yard

Blue Gray  $\frac{3}{8}$  yard

Dark Blue  $\frac{3}{8}$  yard

Teal  $\frac{3}{8}$  yard

Turquoise  $\frac{3}{8}$  yard

Lime  $\frac{1}{4}$  yard

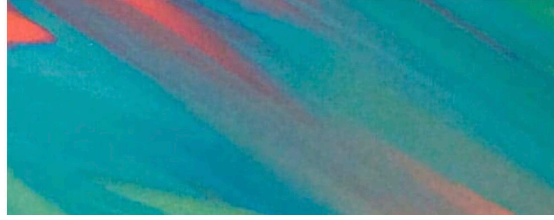
Coral  $\frac{3}{4}$  yards

White  $1 \frac{1}{4}$  yards

Light Blue  $2 \frac{1}{2}$  yards

Sewing Machine, Basic Sewing Notions,  
Rotary Cutting Supplies (6" x 12" and 12 1/2" square rec.),  
(3) Gallon Plastic Baggies (Optional), Paper and Pencil

THE BALBOA  
MYSTERY



**Pre-Workshop Cutting:**

Medium Blue

3 (3 1/2" x WoF) Strips

Blue Gray

3 (3 1/2" x WoF) Strips

Dark Blue

3 (3 1/2" x WoF) Strips

Teal

3 (3 1/2" x WoF) Strips

Turquoise

3 (3 1/2" x WoF) Strips

Light Blue

First cut: 4 (7 1/2" x LoF) Borders

Then from remaining: 48 (3 1/2" x 3 1/2") Squares

White

1 (6 1/2" x WoF) Strips; Subcut 6 (6 1/2") Squares

1 (7 3/4" x WoF) Strip

5 (3 1/2" x WoF) Strips

Coral

5 (2 1/2" x WoF) Strips

1 (7 3/4" x WoF) Strip

Lime

1 (7 3/4" x WoF) Strip

Please Bring All Fabrics to Workshop  
**Lyn Brown \* LynBrownDotCom@gmail.com**